



SINUS LIFT WITH IMMEDIATE CONELOG IMPLANT SYSTEM PLACEMENT. CASE REPORT

Enzo Iacomino (1), Giuseppe Ferrante(2), Francesca Chella (3), Daniele Moretto (4)

(1)Mr Enzo Iacomino, MD, Maxillo-Facial and ORL Surgeon, Private Praticce in "Villa Letizia" Clinic, L'Aquila (Italy)

(2)Mr Giuseppe Ferrante, DDS, Cardarelli Hospital, Maxillo-Facial Surgery Unit, Naples (Italy)

(3)Ms Francesca Chella, Student, Faculty of Dentistry, University of L'Aquila (Italy)

(4)Mr Daniele Moretto, DDS Private Practice in Rome (Italy)

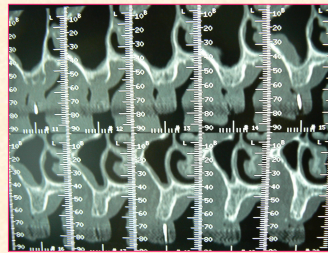
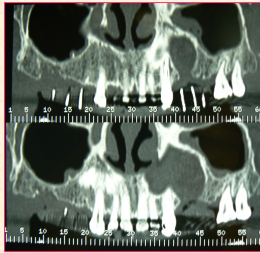
OBJECTIVE: The procedure of the maxillary sinus from the lateral access window consists in lifting the sinus mucosa and placing under it graft materials capable of forming a mineralized tissue that can support the endosseous implants.

MATERIAL AND METHODS: assessing the clinical and radiographic aspects in a one year case of a sinus lift from lateral window with immediate Coneolog Implant System placement (Camlog).

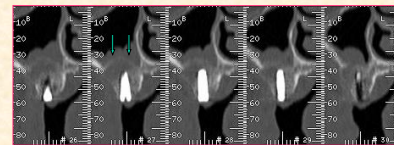
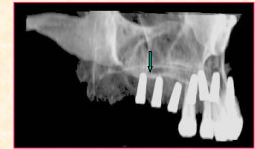


RESULTS AND CONCLUSION: the fundamental characteristics that make the Coneolog Implant System particularly suited for this type of surgical procedure are: 1) the taper of the body that allows easy insertion through the self-centering; 2) the self-tapping thread that guarantees the opportunity to prepare the implant site (press-fit technique) with significant primary stability even in 3-5mm of basal bone, 3) neck implant with Promote sandblasted and etched surface that allows rapid bone integration.

TC-Dentascan pre-sinus lift procedure and radiologic guide



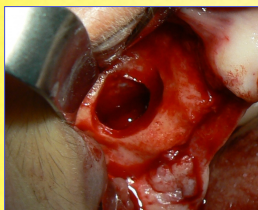
TC-Dentascan and 3D post-sinus lift procedure



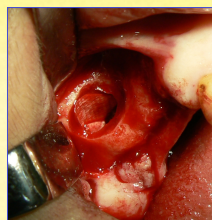
Upper limit of sinus lift (green arrow)

Surgical Procedure

Lateral approach



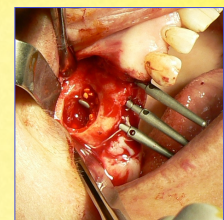
Positioning of the collagenic membrane



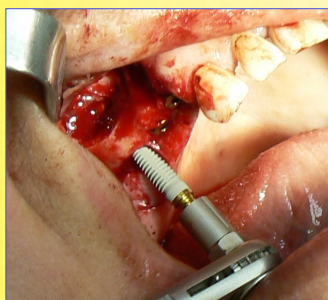
Preparation of biomaterial (calcium sulphate and rifampicin)



Parallelism indicators



Coneolog Positioning



Immediate post-operative radiography

